

其他附件

辊筒固定块

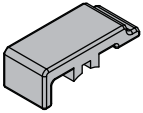
辊筒专用连接件，安装快速方便。

材质：固定块-铸钢 镀锌

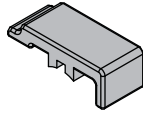
端盖-尼龙6 黑色

辊筒固定块-A

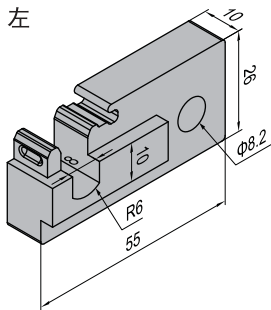
端盖



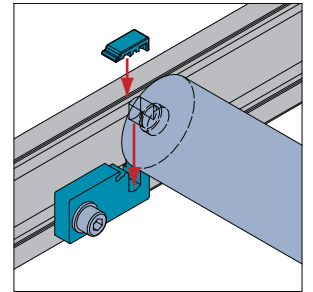
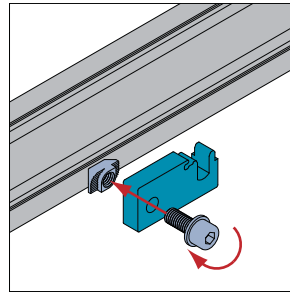
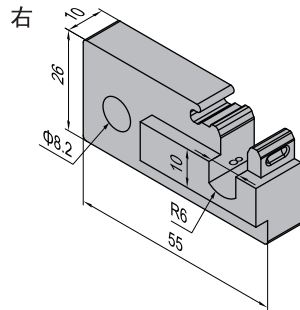
端盖



左

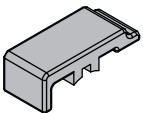


右

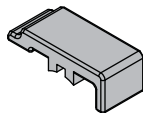


辊筒固定块-B

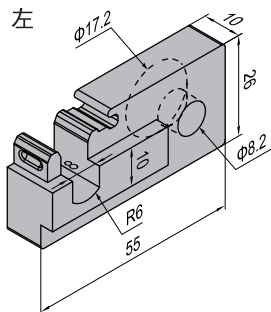
端盖



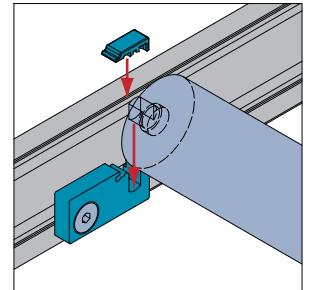
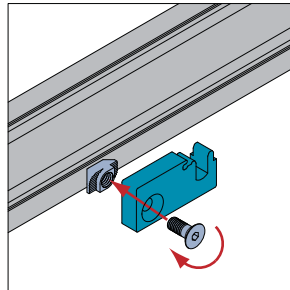
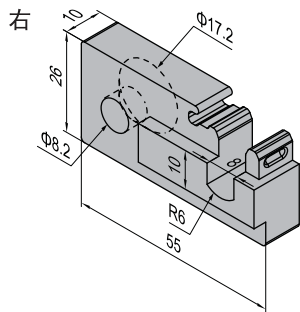
端盖














左



右



描述	紧固组件	端盖 (pcs)	重量 (g)	订购编号
辊筒固定块-A-左+右(单个供货)		2	200	8.51.01A
辊筒固定块-A-左+右(成套供货)	2xD	2	242	8.51.01A.ST
辊筒固定块-B-左+右(单个供货)		2	194	8.51.01B
辊筒固定块-B-左+右(成套供货)	2xFQ	2	226	8.51.01B.ST

D	紧固组件	FQ	紧固组件
	M8x20 螺钉		M8x20 螺钉
	镀锌		镀锌
	M8 平垫		M8 T形螺母
	镀锌		镀锌
	M8 T形螺母		镀锌
	镀锌		