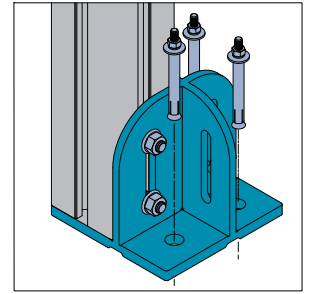


Floor Elements

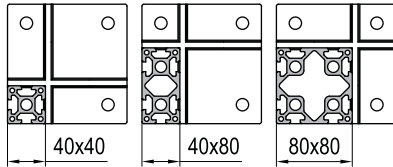
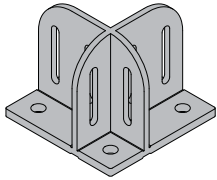
Base Plate

To support strut profile mounted between sections of protective barrier system. Expansion bolts chocked into floor can offer very high stability.

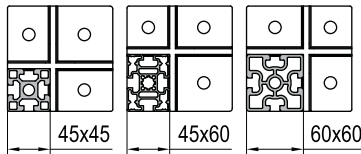
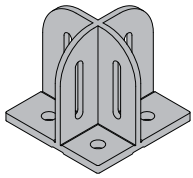
Material and Color: die cast steel with surface corrosion resist treated grey



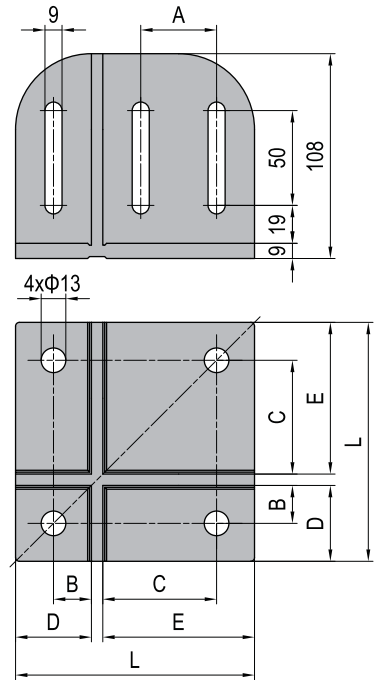
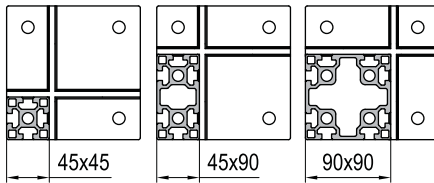
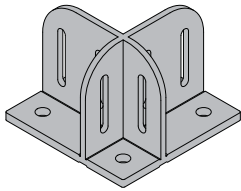
Base Plate-4080



Base Plate-4560



Base Plate-4590



| Description | L(mm) | A(mm) | B(mm) | C(mm) | D(mm) | E(mm) | Fastening Set | Mass (g) | Part No. |
|-------------------------|-------|-------|-------|-------|-------|-------|---------------------------|----------|---------------|
| Base Plate-4080 (pcs) | 126 | 40 | 20 | 60 | 40 | 80 | | 1930 | 5.11.4080 |
| Base Plate-4080 (set A) | | | | | | | 4x C +3x AA | 2240 | 5.11.4080.STA |
| Base Plate-4080 (set B) | | | | | | | 6x C +3x AA | 2290 | 5.11.4080.STB |
| Base Plate-4080 (set C) | | | | | | | 8x C +3x AA | 2340 | 5.11.4080.STC |
| Base Plate-4560 (pcs) | 111 | | 22.5 | 30 | 45 | 60 | | 1600 | 5.11.4560 |
| Base Plate-4560 (set) | | | | | | | 4x C +3x AA | 1910 | 5.11.4560.ST |
| Base Plate-4590 (pcs) | 141 | 45 | 22.5 | 67.5 | 45 | 90 | | 2330 | 5.11.4590 |
| Base Plate-4590 (set A) | | | | | | | 4x C +3x AA | 2640 | 5.11.4590.STA |
| Base Plate-4590 (set B) | | | | | | | 6x C +3x AA | 2690 | 5.11.4590.STB |
| Base Plate-4590 (set C) | | | | | | | 8x C +3x AA | 2740 | 5.11.4590.STC |

