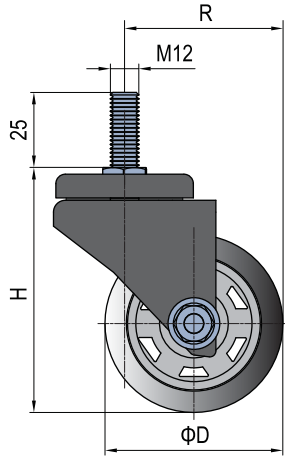


Floor Elements

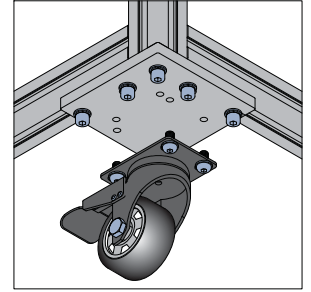
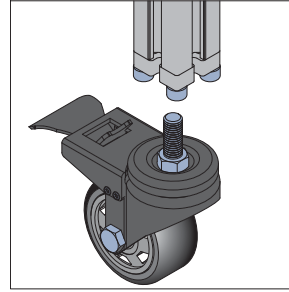
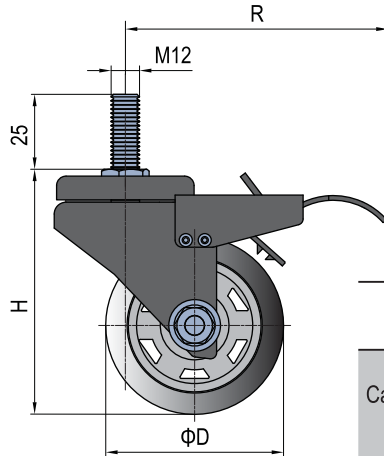
Castor

Material and Color: Base-steel sheet, plastic powder coated, black Wheel-polyurethane

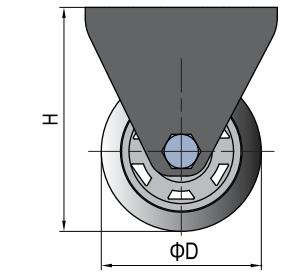
Castor-Thread-Universal



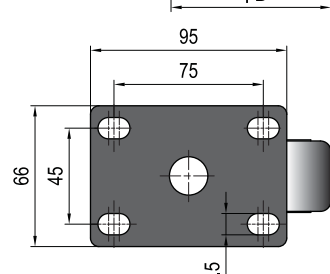
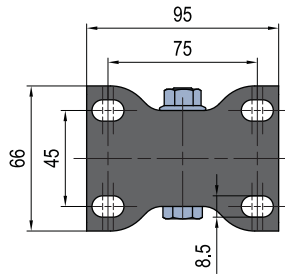
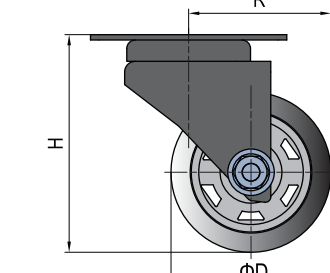
Castor-Thread-Brake



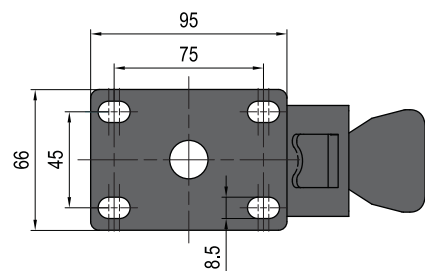
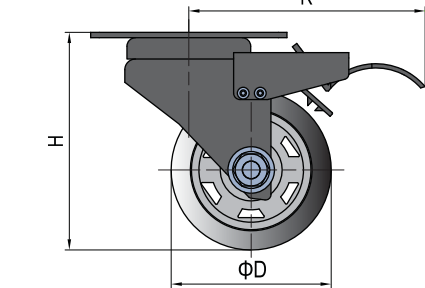
Castor-Plate-Fixed



Castor-Plate-Universal



Castor-Plate-Brake



Description	D (mm)	R (mm)	H (mm)	Load (N)	Mass (g)	Part No.
Castor-Thread-Universal	63	63	92	800	550	5.41.63.M12
	75	73	107	1050	670	5.41.75.M12
	100	87	130	1350	790	5.41.100.M12
Castor-Thread-Brake	63	103	92	800	650	5.41.63.M12B
	75	103	107	1050	770	5.41.75.M12B
	100	111	130	1350	930	5.41.100.M12B
Castor-Plate-Fixed	63		92	800	370	5.41.63F
	75		107	1050	490	5.41.75F
	100		130	1350	670	5.41.100F
Castor-Plate-Universal	63	63	92	800	570	5.41.63U
	75	73	107	1050	690	5.41.75U
	100	87	130	1350	870	5.41.100U
Castor-Plate-Brake	63	103	92	800	670	5.41.63B
	75	103	107	1050	790	5.41.75B
	100	111	130	1350	970	5.41.100B