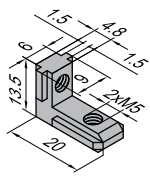


Connecting Elements

Inner Bracket (set screw pre-installed)

Inner bracket type A and type B are widely used to construct door/window and protective barrier frame due to its low cost, high efficiency and good installation appearance.

Material: die cast zinc aluminum alloy for bracket
zinc plated steel for set screw

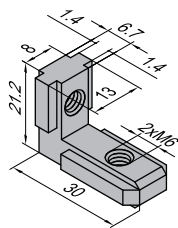


M5x6



Inner Bracket-6-A
3.41.06A

Inner Bracket-6-B
3.41.06B

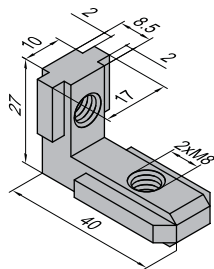


M6x8



Inner Bracket-8-A
3.41.08A

Inner Bracket-8-B
3.41.08B

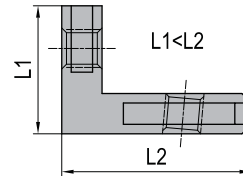
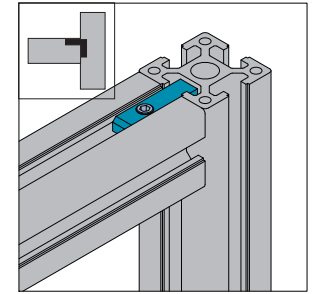
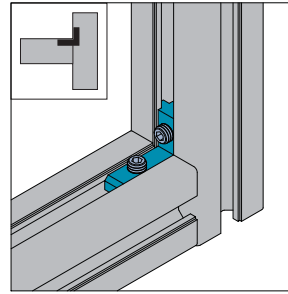


M8x10

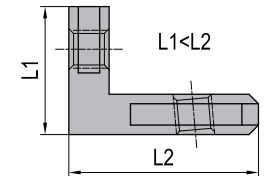


Inner Bracket-10-A
3.41.10A

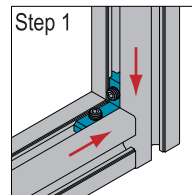
Inner Bracket-10-B
3.41.10B



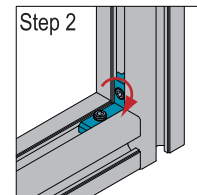
Type A



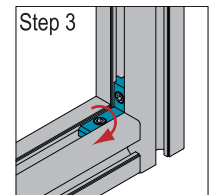
Type B



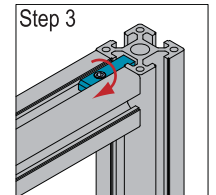
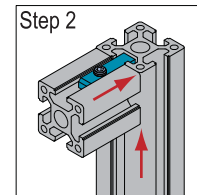
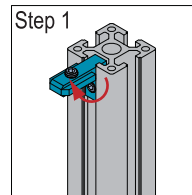
set parts in position



tighten L1 set screw



tighten L2 set screw



Description	Mass (g/pcs)	Part No.
Inner Bracket-6-A (with set screw)	6	3.41.06A
Inner Bracket-6-B (with set screw)	6	3.41.06B
Inner Bracket-8-A (with set screw)	18	3.41.08A
Inner Bracket-8-B (with set screw)	18	3.41.08B
Inner Bracket-10-A (with set screw)	36	3.41.10A
Inner Bracket-10-B (with set screw)	36	3.41.10B