

Additional Accessories

Mounting Adaptor for Roller

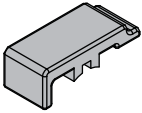
Simple mounting, enables installation without dismounting of frame.

Material: Fixity-die cast steel, zinc plated

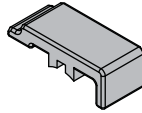
End cap-PA6, black

Mounting Adaptor for Roller-A

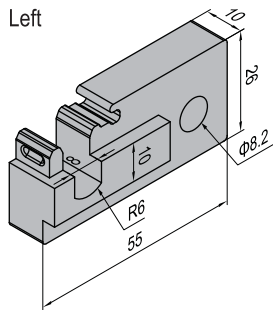
End Cap



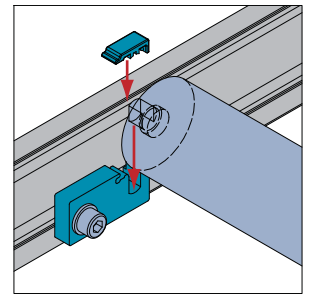
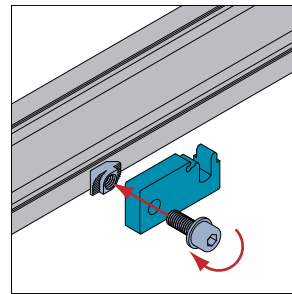
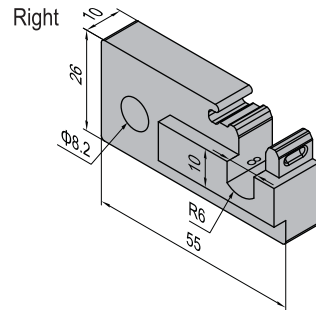
End Cap



Left

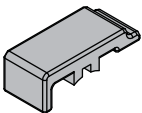


Right

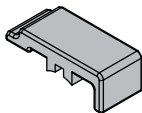


Mounting Adaptor for Roller-B

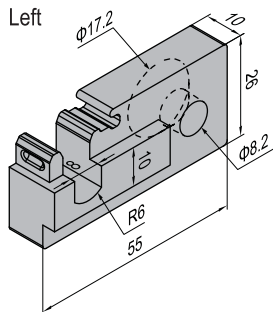
End Cap



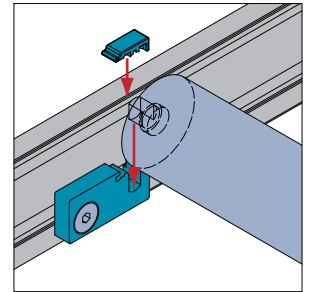
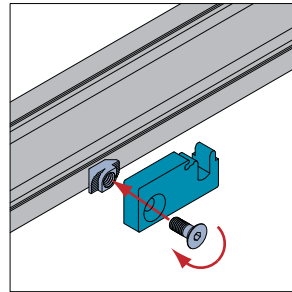
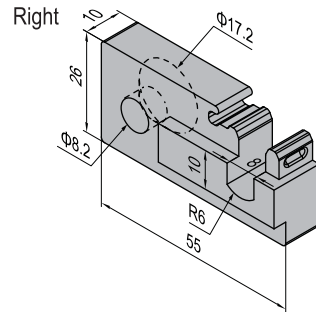
End Cap








Left



Right



Description	Fastening Set	End Cap	Mass (g)	Part No.
Mounting Adaptor for Roller-A-Left+Right (pcs)		2	200	8.51.01A
Mounting Adaptor for Roller-A-Left+Right (set)	2xD	2	242	8.51.01A.ST
Mounting Adaptor for Roller-B-Left+Right (pcs)		2	194	8.51.01B
Mounting Adaptor for Roller-B-Left+Right (set)	2xFQ	2	226	8.51.01B.ST

D	Fastening Set	FQ	Fastening Set
	M8x20 Bolt zinc plated		M8x20 Bolt zinc plated
	M8 Washer zinc plated		M8 T Nut nickel plated
	M8 T Nut nickel plated		